



KEW INDUSTRIAL PARK KEW INDUSTRIAL PARK KEW INDUSTRIAL PARK
KEW INDUSTRIAL PARK KEW INDUSTRIAL
 KEW INDUSTRIAL PARK KEW INDUSTRIAL PARK KEW INDUSTRIAL PARK
 KEW INDUSTRIAL PARK KEW INDUSTRIAL PARK KEW INDUSTRIAL

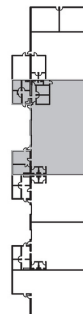
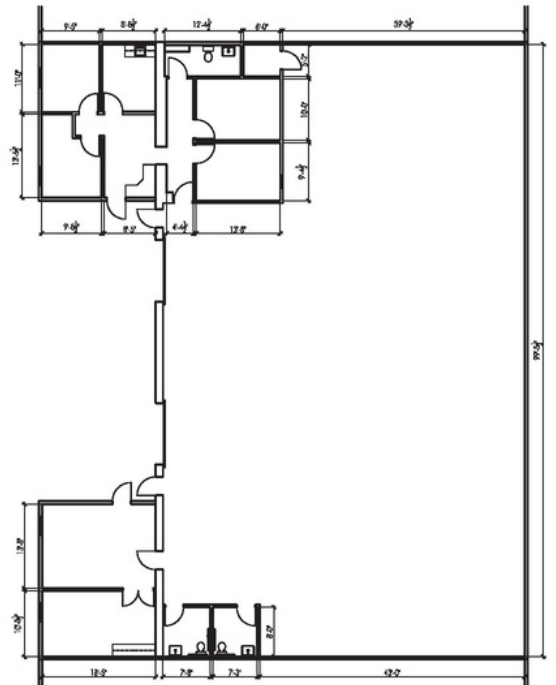


INDUSTRIAL WAREHOUSE FOR LEASE

3200 W. 71ST AVE. WESTMINSTER, CO 80030
 UNIT 18 & 19 | 7,000 SF | \$9.50 NNN

PROPERTY DESCRIPTION

- OFF-STREET PARKING
- LOCATED NEAR RTD B-LINE LIGHT RAIL WESTMINSTER STATION
- LOCATED WITHIN ADAMS COUNTY ENTERPRISE ZONE
- RARE AUTOMOTIVE ZONING
- CLEAR HEIGHT: 16'-18'
- LOADING: TWO 10'X12' GRADE LEVEL DOORS



UNIT 18
7,000 SF



KEW

REALTY CORPORATION

PROPERTY DETAILS: KEW INDUSTRIAL PARK

ADDRESS: 3200 - 3240 W. 71st Ave
7015 - 7101 Julian St

CITY: Westminster

COUNTY: Adams

BUILDING SIZE: 82,659 SF

NUMBER OF BUILDINGS: 4

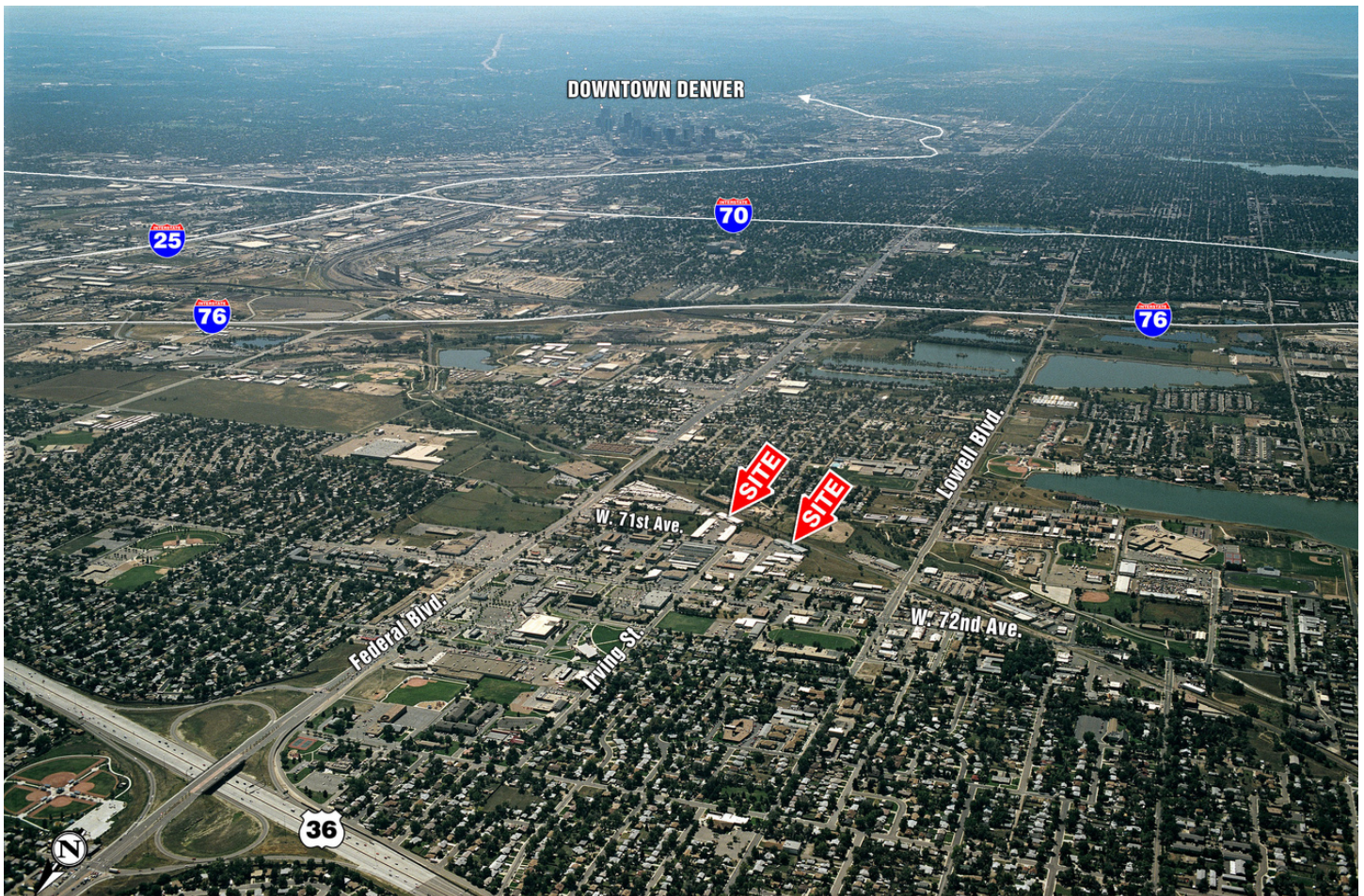
YEAR OF CONSTRUCTION: 1974 & 1977

OWNER: KEW Realty Corporation

LOCATION: Central, Federal Blvd., exit off US-36, I-76, I-25. Located within an Adams County Enterprise Zone. Near RTD FasTracks commuter rail stop.



LOCATION



All information contained in this brochure, while not guaranteed, is obtained from sources deemed reliable. No representation is made as to the accuracy thereof and is submitted subject to errors, omissions, change of price, withdrawal or other conditions, without notice. It is the responsibility of either you or your agent to verify its accuracy.

LEASING CONTACTS | 720 308 2230

BLAKE HAM | BHAM@KEWREALTY.COM

KEW
Realty Corporation