

# CANYON POINT II

CANYON POINT II

112 NORTH RUBEY DRIVE | GOLDEN, CO 80403

**KEW**  
Realty Corporation

## LOCATED AT THE FOOTHILLS OF THE ROCKIES



### PROPERTY DESCRIPTION & AMENITIES

- LIMITED AVAILABILITY
- PANORAMIC VIEWS
- UNIQUE LOCATION NEAR DOWNTOWN GOLDEN, COORS, SCHOOL OF MINES, AND JEFFCO GOVERNMENT BUILDINGS
- BUILDING SIGNAGE AVAILABLE WITH VISIBILITY FROM HWY 93
- EASY ACCESS
- SEVERAL NEIGHBORHOOD AMENITIES INCLUDING WALKABLE STARBUCKS, LOCAL RESTAURANTS/TAVERN, AND CHILD DAY CARE FACILITY
- NEWER BUILDING WITH NICE FINISHES AND FIXTURES
- PLENTY OF PARKING



## AVAILABILITY

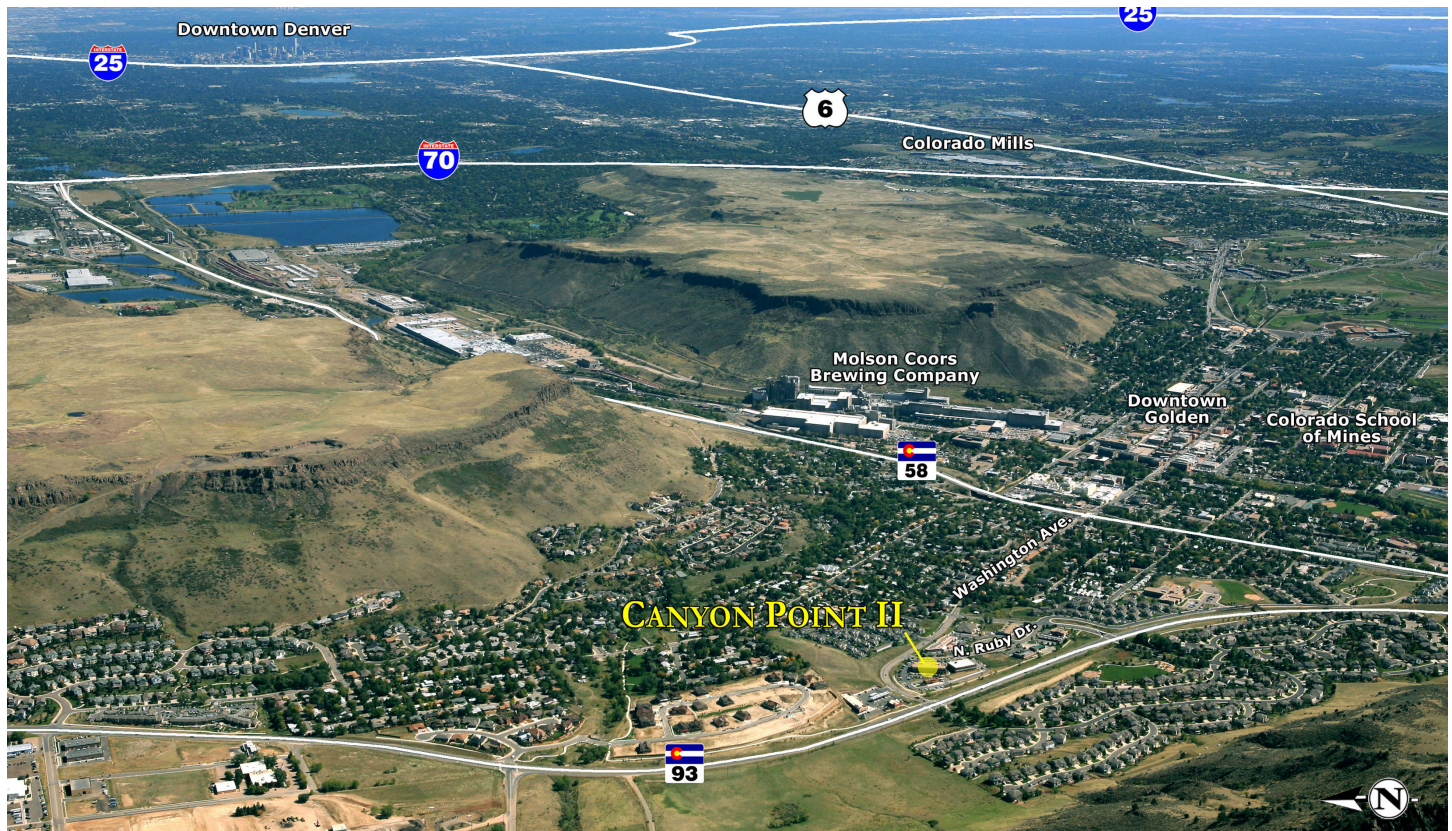
SUITE	SF	RATE/SF	DETAILS
200	3,556	\$26.00/FSG	THIS SPACIOUS CORNER SUITE OFFERS PLENTY OF SPACE FOR A RECEPTION AND WAITING AREA, 7 PRIVATE OFFICES, A LARGE CONFERENCE ROOM, A KITCHEN/BREAK AREA, AND STORAGE SPACE. THIS OFFICE ALSO HAS CLOSE ACCESS TO THE ELEVATOR AND STAIRS.

## BUILDING DETAILS: CANYON POINT II

ADDRESS:	112 N. RUBEY DRIVE
CITY:	GOLDEN
COUNTY:	JEFFERSON
BUILDING SIZE:	26,155 SF
NUMBER OF FLOORS:	2
APPROX. FLOOR PLATE:	13,000 SF
YEAR OF CONSTRUCTION:	2003
OWNER:	CANYON POINT II, LLC
MANAGEMENT:	KEW REALTY CORPORATION
PARKING:	3:1000, 84 SPACES



## LOCATION



ALL INFORMATION CONTAINED IN THIS BROCHURE, WHILE NOT GUARANTEED, IS OBTAINED FROM SOURCES DEEMED RELIABLE. NO REPRESENTATION IS MADE AS TO THE ACCURACY THEREOF AND IS SUBMITTED SUBJECT TO ERRORS, OMISSIONS, CHANGE OF PRICE, WITHDRAWAL OR OTHER CONDITIONS, WITHOUT NOTICE. IT IS THE RESPONSIBILITY OF EITHER YOU OR YOUR AGENT TO VERIFY ITS ACCURACY.

LEASING CONTACTS | 303-329-8100  
BLAKE HAM | BHAM@KEWREALTY.COM

**KEW**  
Realty Corporation